

Sabercat Trail Extension Project

Project Overview

The Sabercat Trail Extension Project will cross the canyon of I-680 currently dividing the Irvington District, East Bay Greenway Trail, and future Irvington BART Station from the Sabercat Historical Park, Ohlone College, and Fremont Hills. A new interpretive plaza will inform the community about the unique paleontological history of the area from 1.9 million years ago. Additionally, the project will create a bicycle/pedestrian connection over the Union Pacific Railroad (UPRR)/BART tracks.

Project Goals

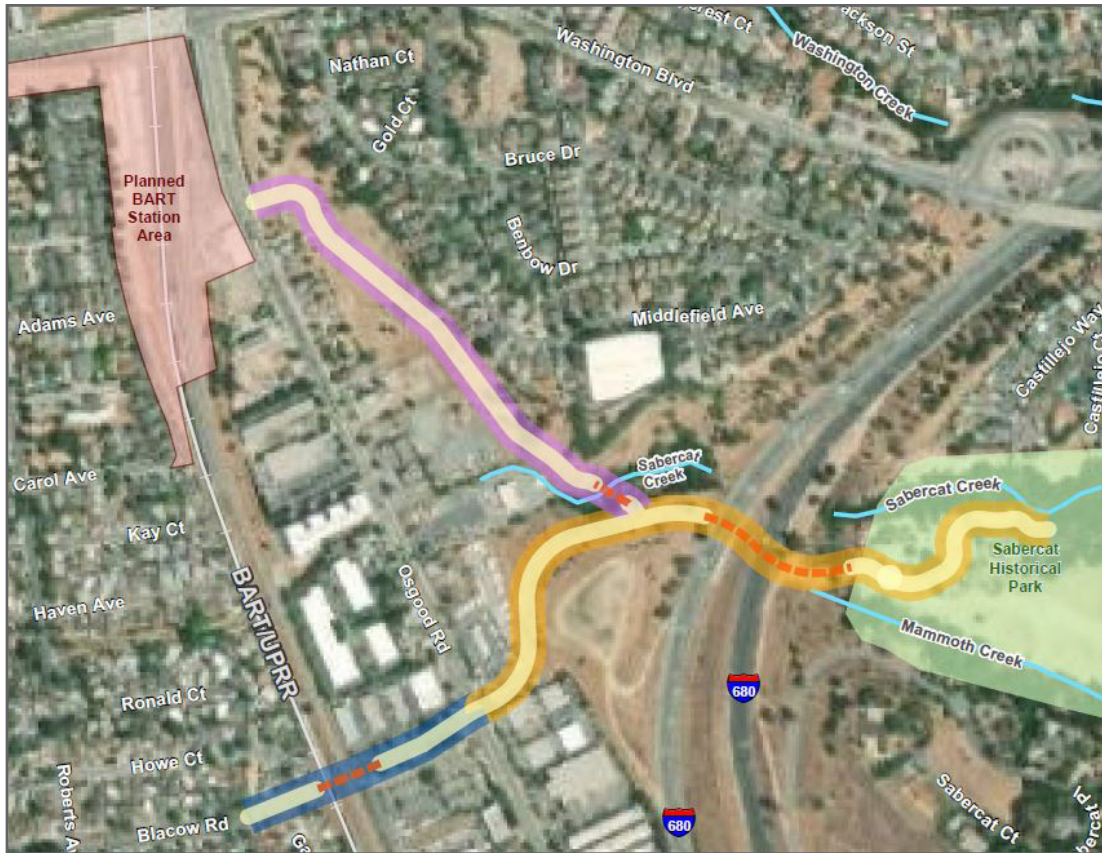
- Enhanced trail connectivity between the East Bay Greenway, Sabercat Historical Park, and trails in the Fremont Hills
- Provide educational information about unique history of the area.
- Supports local, regional, State, and national goals to reduce greenhouse gas emissions and increased mobility by walking, bicycling and using transit.

Project Need

- The existing trail and bikeway network lacks a direct, comfortable route connecting the Irvington and Mission San Jose communities.
- The existing available bikeways are on arterial roadways that carry significant traffic volumes, creating conflicts between bicyclists, pedestrians, and automobiles.



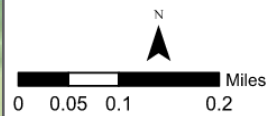
Project Location Map



Sabercat Trail Extension Project

Legend

- At-Grade Trail
- Elevated Structure
- Schools
- Natural Creek
- Parks



Trail Sections

- Blacow to Osgood
- Osgood to Sabercat Historical Park
- North Trail

Project Status & Schedule

Schedule by Phase

Scoping	Complete
Planning/Environmental	Complete Late 2021
Final Design	Complete Late 2022
Right-of-Way	Complete Late 2022*
Construction	Summer 2023 - Fall 2025*

*Schedule subject to funding availability

Project Cost & Funding

Cost Estimate by Phase (\$x1000)

Scoping	\$100
Planning/Environmental	\$2,800
Final Design	\$2,900
Right-of-Way/Construction	\$68,900
- Sabercat Trail w/ I-680 Bridge	\$30,400
- Blacow Trail w/ UPRR Bridge	\$22,200
- North Trail w/ Creek Bridge	\$16,300

Total Cost: \$74,700

Funding Sources (\$x1000)

Alameda CTC (Measure BB)	\$100
State (Natural Resources Agency)	\$5,700
TBD*	\$68,900
Total Revenues:	\$74,700

*Project is seeking funding from Regional, State, and Federal sources

Partners & Stakeholders

