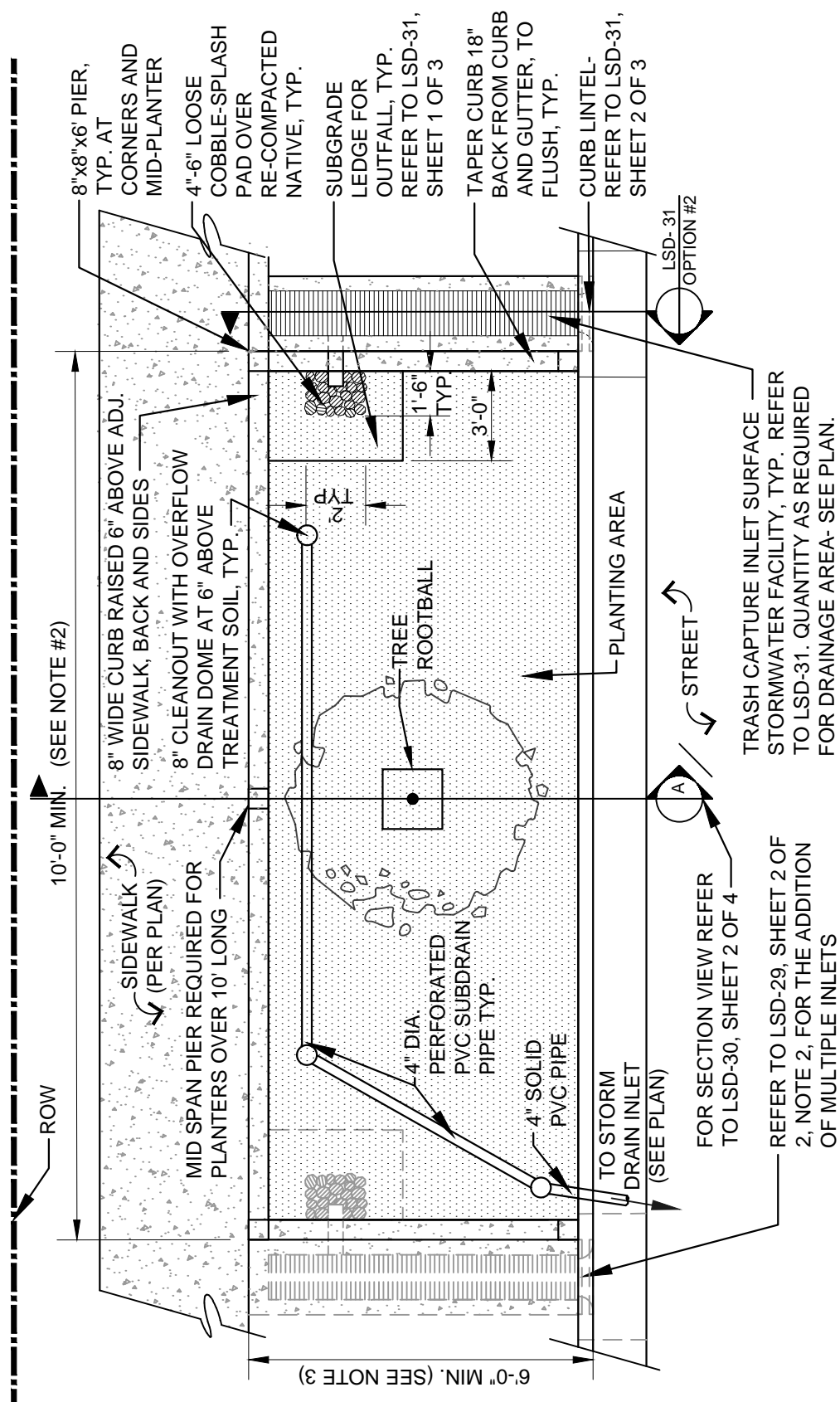


SIZING INFORMATION:

- A. SIZE TREEWELL FILTER TO EQUAL 4% OF THE DRAINAGE AREA ENTERING PLANTER. REFER TO ACCWP C.3 STORMWATER TECHNICAL MANUAL.
- B. FOR ADDITIONAL PLANTING AND IRRIGATION REFER TO LSD-2 REQUIREMENTS. TREES MUST BE IRRIGATED.



NOTES:

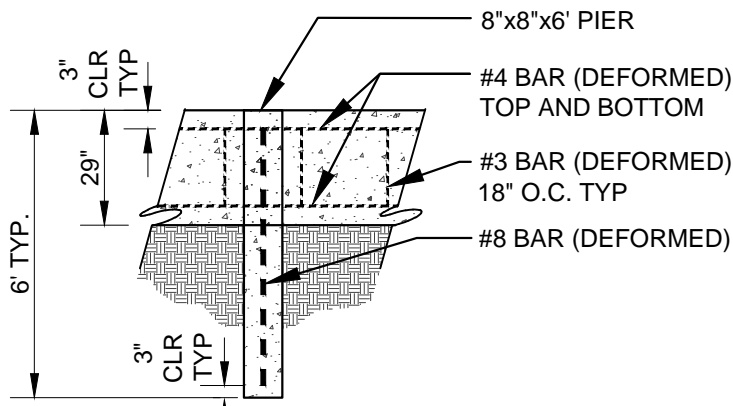
- 1. USE NDS DOME ATRIUM GRATE FOR OVERFLOW DRAINS, OR APPROVED EQUAL. COLOR: BLACK
- 2. DIMENSIONS VARY DEPENDING ON SIZE OF DRAINAGE AREA, BUT NOT LESS THAN 5'-0" BY 10'-0"
- 3. SEE SHEET 3 OF 4 FOR ALTERNATE MONOLITHIC SIDEWALK DESIGN

**CITY OF FREMONT
STANDARD DETAILS
CITY STANDARD
STORMWATER PLANTER
PLAN VIEW**

APPR	Council Revision	12/13/11
	REVISED	DATE
REVISIONS		

FILE NO.	SCALE	DRAWN	CHECKED	DATE
LSD-30.DWG	3/16" = 1'-0"	MM	RER	DEC. 2011

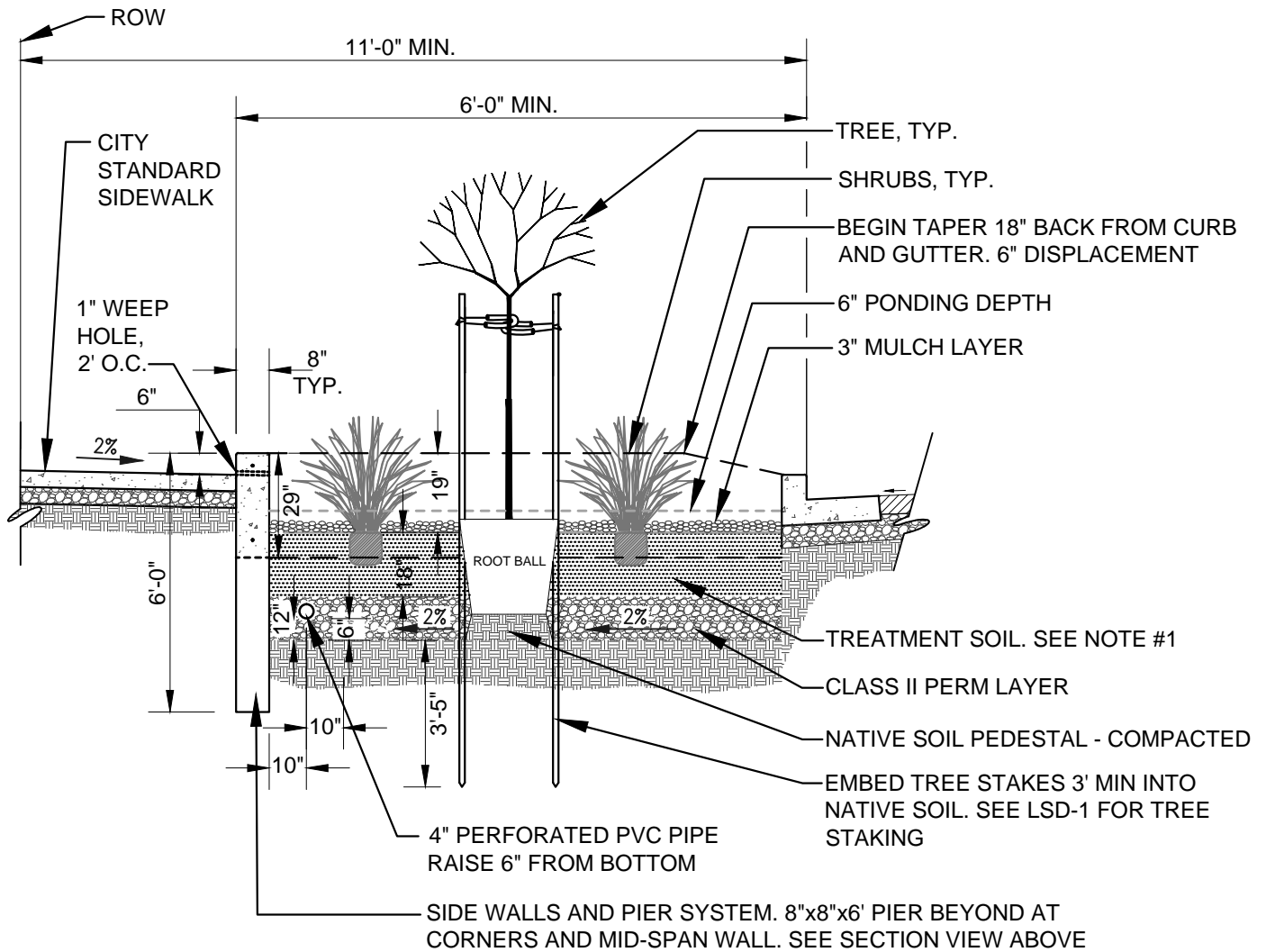
DATE APPROVED BY CITY COUNCIL 12/13/11	
RESOLUTION NO. 2006-31	
<i>Ham Hughes</i>	
CITY ENGINEER	
DWG NO.	1 OF 4
LSD-30	



SECTION VIEW
8" SIDE WALLS AND PIER INTERFACE

NOTES:

1. TREATMENT SOIL SHALL BE COMPOSED OF:
60% ASTM C-33 SAND
30% USCC STA CERTIFIED COMPOST
10% SMALL WOOD CHIPS
2. CONTRACTOR MUST SUBMIT TEST RESULTS FROM COMPOST FACILITY.
3. PLANTS MUST BE IRRIGATED.



SECTION A

	Council Revision	12/13/11
APPR	REVISED	DATE
REVISIONS		

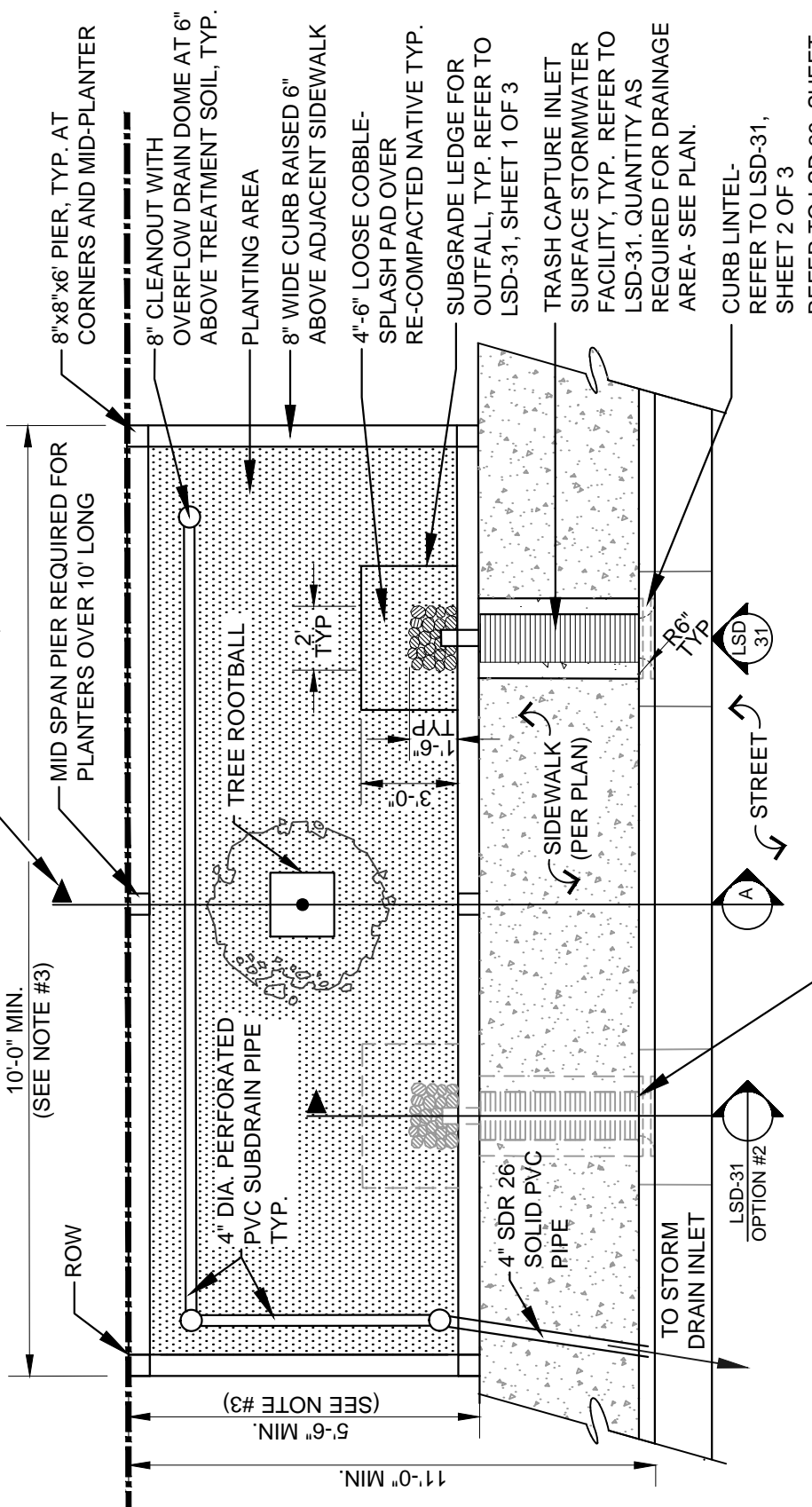
CITY OF FREMONT
STANDARD DETAILS
CITY STANDARD
STORMWATER PLANTER
SECTIONS

DATE APPROVED BY CITY COUNCIL 12/13/11	
RESOLUTION NO. 2006-31	
<i>Ham Hughes</i>	
CITY ENGINEER	

FILE NO. LSD-30.DWG	SCALE N.T.S.	DRAWN MM/CC	CHECKED RER	DATE DEC. 2011	DWG NO. LSD-30	2 OF 4
------------------------	-----------------	----------------	----------------	-------------------	-------------------	--------

SIZING INFORMATION:
 A. SIZE TREEWELL FILTER TO EQUAL 4% OF THE DRAINAGE AREA ENTERING PLANTER. REFER TO ACCWP C.3 STORMWATER TECHNICAL MANUAL.
 B. FOR ADDITIONAL PLANTING AND IRRIGATION REFER TO LSD-2 REQUIREMENTS. TREES MUST BE IRRIGATED.

FOR SECTION VIEW REFER TO LSD-30, SHEET 2 OF 2



NOTES:
 1. USE NDS DOME ATRIUM GRATE FOR OVERFLOW DRAINS, OR APPROVED EQUAL. COLOR: BLACK
 2. DIMENSIONS VARY DEPENDING ON SIZE OF DRAINAGE AREA, 5'-0" BY 10'-0" MIN.
 3. THIS IS AN ALTERNATE DESIGN FROM THE RESIDENTIAL STANDARD AND IS FOR RETROFIT OR MONOLITHIC SITUATIONS ONLY, AS APPROVED BY THE CITY ENGINEER.

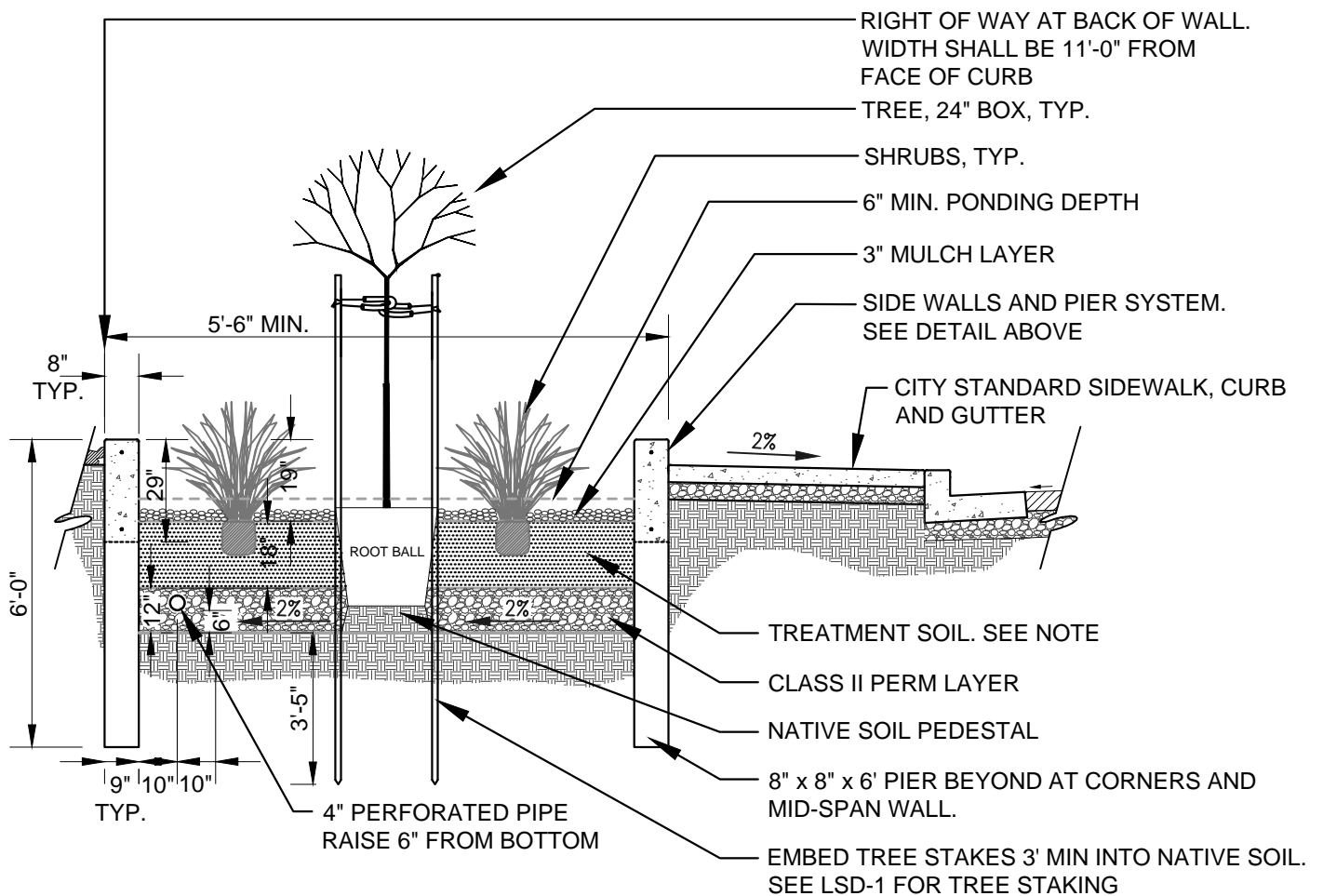
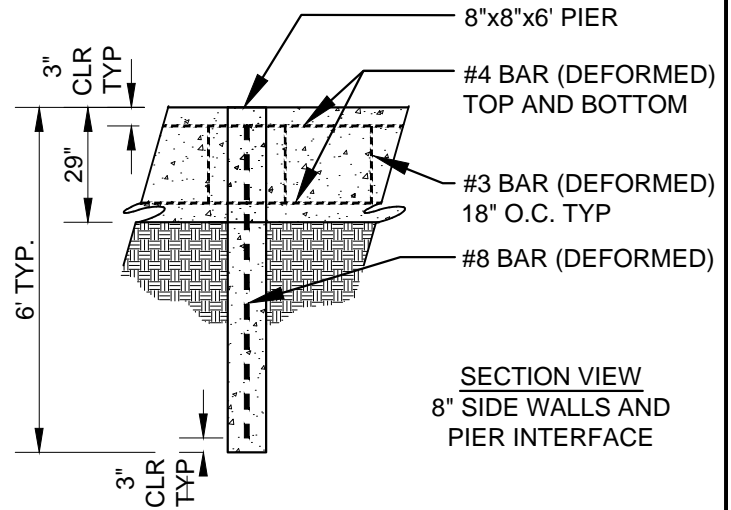
APPR	REVISION	DATE
	Council Revision	12/13/11
REVISIONS		
FILE NO.	SCALE	DRAWN
LSD-30.DWG	3/16" = 1'-0"	MM/TB/CC

CITY OF FREMONT
 STANDARD DETAILS
 CITY STANDARD
STORMWATER PLANTER
 PLAN VIEW - ALTERNATE


DATE APPROVED BY CITY COUNCIL 12/13/11	
RESOLUTION NO. 2006-31	
<i>Ham Hughes</i>	
CITY ENGINEER	
DWG NO.	3 OF 4
LSD-30	

NOTES:

1. TREATMENT SOIL SHALL BE COMPOSED OF:
60% ASTM C-33 SAND
30% USCC STA CERTIFIED COMPOST (SEE NOTE 2)
10% SMALL WOOD CHIPS
2. CONTRACTOR SHALL SUBMIT TEST RESULTS FROM COMPOST FACILITY.
3. PLANTS MUST BE IRRIGATED.
4. THIS IS AN ALTERNATE DESIGN FROM THE RESIDENTIAL STANDARD AND IS FOR RETROFIT OR MONOLITHIC SITUATIONS ONLY, AS APPROVED BY THE CITY ENGINEER.



SECTION A

			CITY OF FREMONT STANDARD DETAILS CITY STANDARD STORMWATER PLANTER SECTIONS-ALTERNATE			DATE APPROVED BY CITY COUNCIL 12/13/11	
						RESOLUTION NO. 2006-31	
Council Revision 12/13/11						 CITY ENGINEER	
APPR	REVISED	DATE					
REVISIONS							
FILE NO.	SCALE	DRAWN	CHECKED	DATE	DWG NO.		
LSD-30.DWG	N.T.S.	PN/TB/CC	RER	DEC. 2011	LSD-30	4 OF 4	